

Detecting wet AMD at its earliest stage provides the best chance of preserving your vision



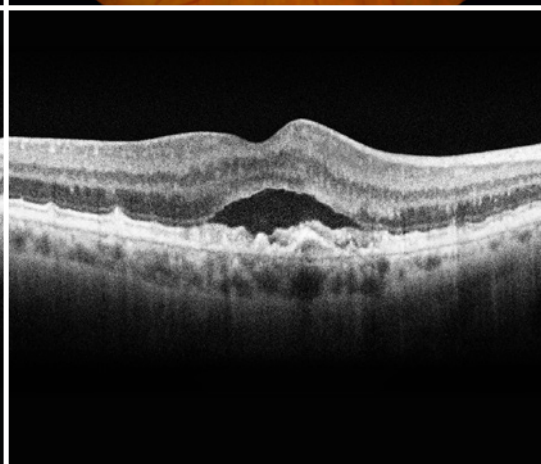
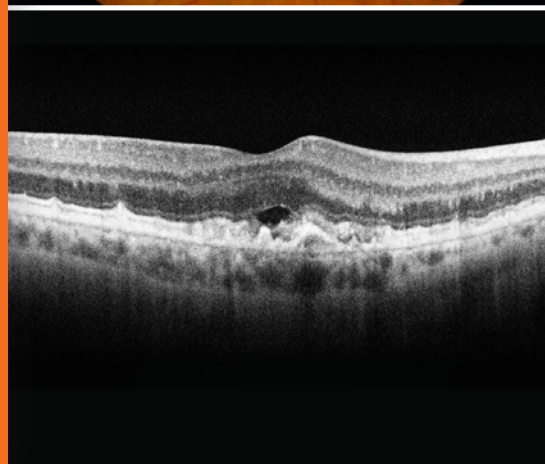
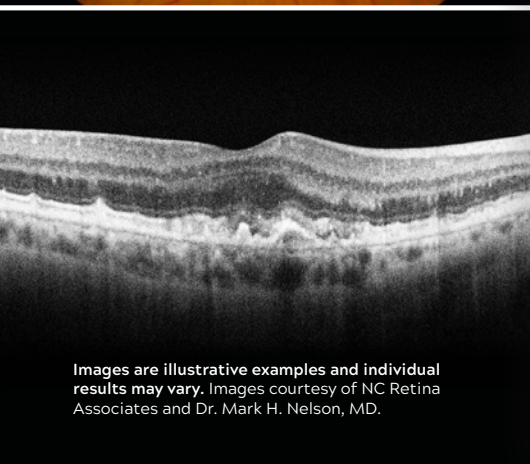
Intermediate Dry AMD



Wet AMD Detected Early



Wet AMD Detected Late



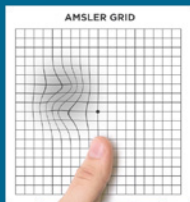
Images are illustrative examples and individual results may vary. Images courtesy of NC Retina Associates and Dr. Mark H. Nelson, MD.

ForeseeHOME™
AMD Monitoring Program

DETECT EARLY
TREAT EARLY

Early Detection Helps Preserve Vision

Patients maintained functional vision at time
of diagnosis (20/40 VA or better)



13-41%

VS

94%

STANDARD OF CARE ALONE

real-world detection
rates from wet AMD
treatment trials^{1,2}

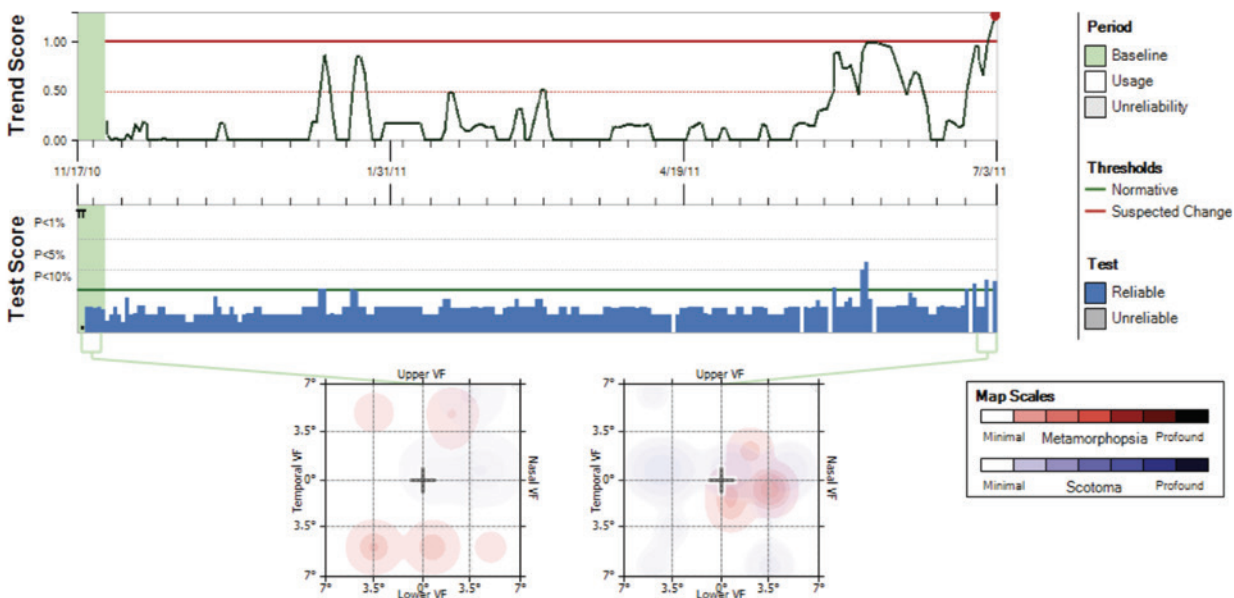
FORESEEHOME®

when ForeseeHome was
added to standard of care
vs. 62% in the control arm³



Eye Care Professional Portal

What your doctor sees when you test with ForeseeHome



Notal Vision and ForeseeHome are US registered trademarks and trademarks in other jurisdictions. © 2020 Notal Vision®. All rights reserved.

Indication for Use: ForeseeHome is intended for use in the detection and characterization of central and paracentral metamorphopsia (visual distortion) in patients with age-related macular degeneration as an aid in monitoring progression of disease factors causing metamorphopsia including, but not limited to choroidal neovascularization (CNV). It is intended to be used at home for patients with stable fixation. ForeseeHome is not intended to diagnose; diagnosis is the responsibility of the prescribing eye-care professional.

References: 1. Fong DS, Custis P, Howes J, et al. *Ophthalmology*. 2010;117:298-302. 2. Ying GS, Huang J, Maguire MG, et al. *Ophthalmology*. 2013;120(1):122-129. 3. Chew EY, Clemons TE, Bressler SB, et al. *Ophthalmology*. 2014;121(2):535-544.

ForeseeHOME™
AMD Monitoring Program