

# Detecting wet AMD at its earliest stage provides the best chance of preserving your vision



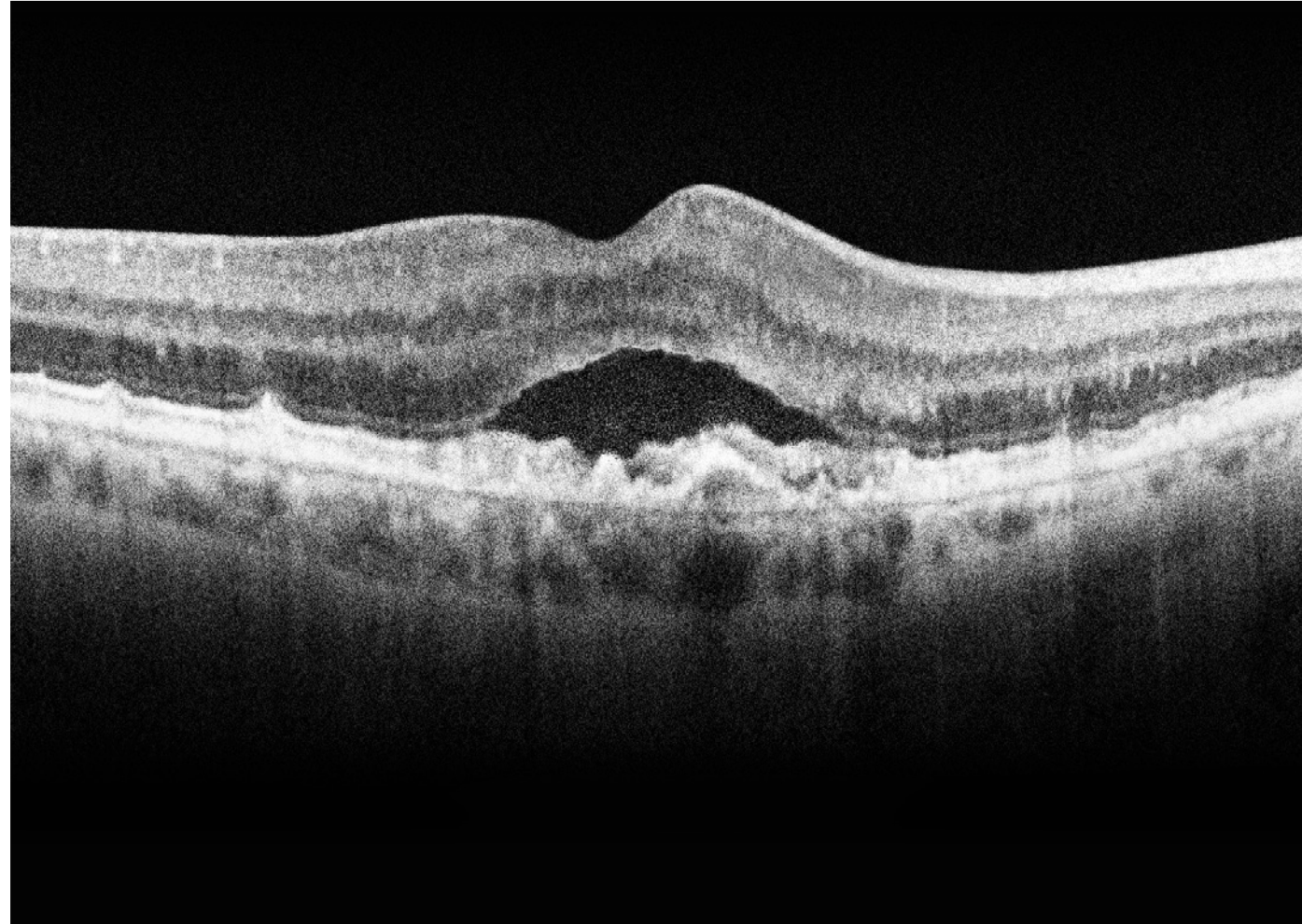
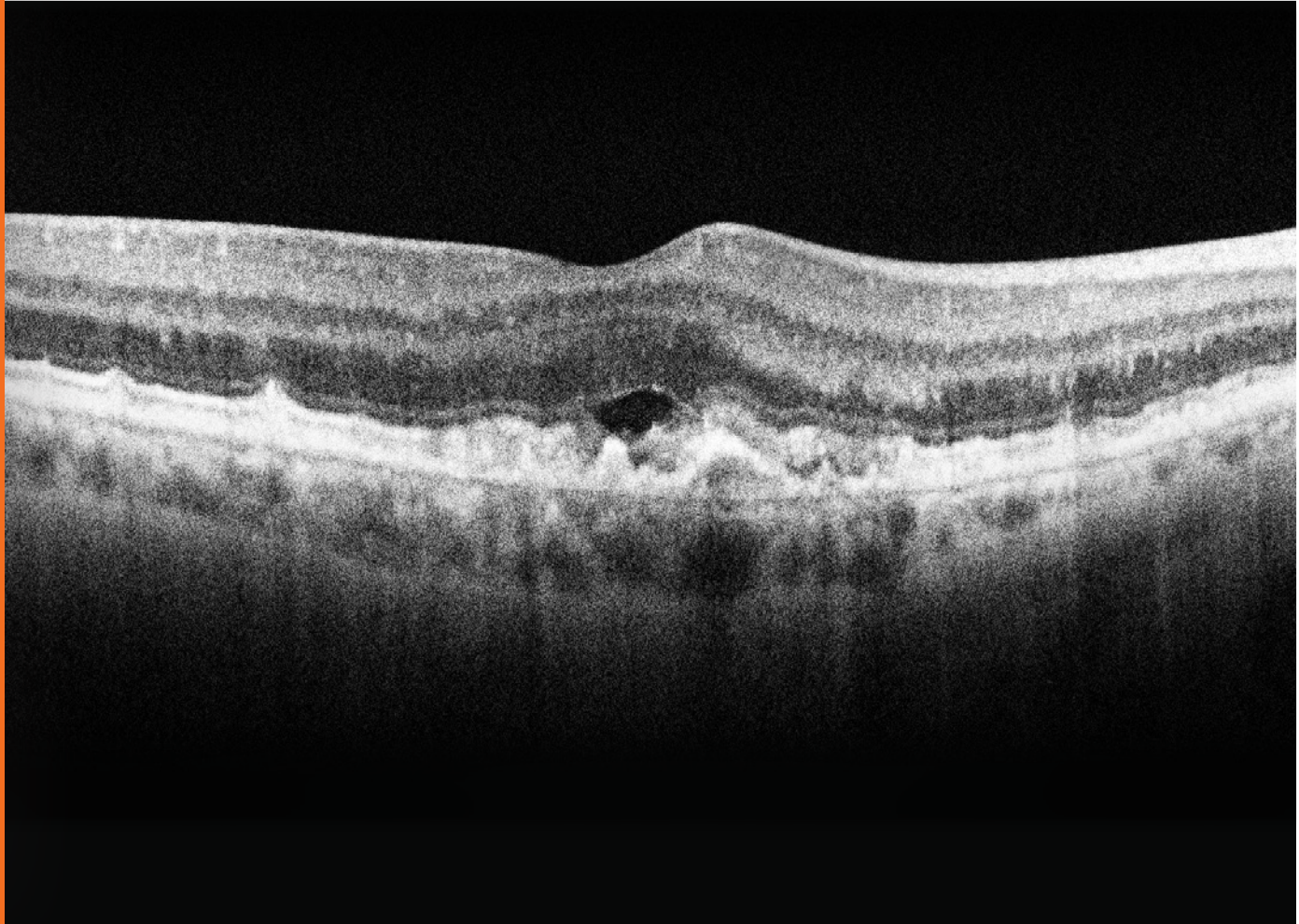
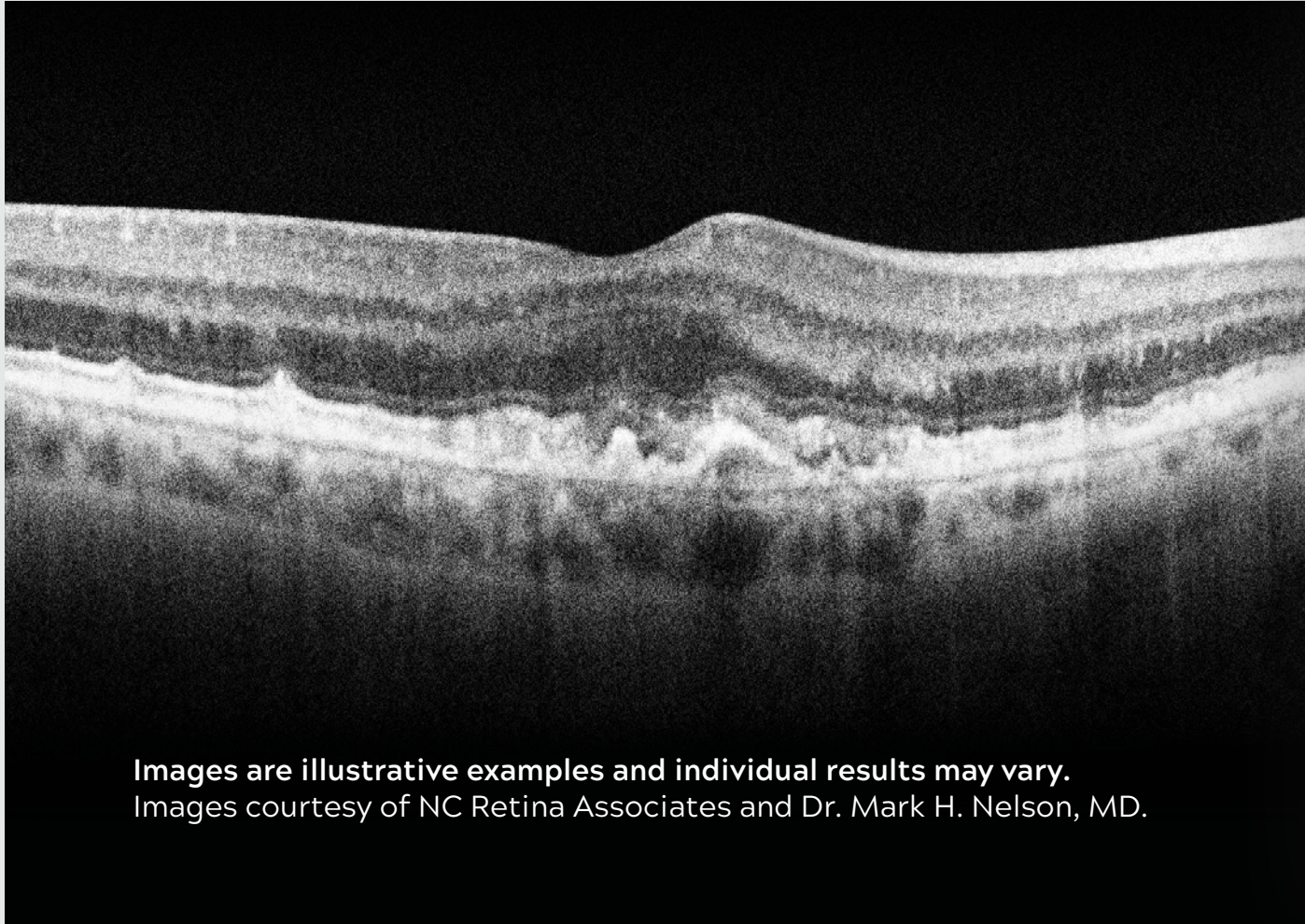
Intermediate Dry AMD



Wet AMD Detected Early



Wet AMD Detected Late



Images are illustrative examples and individual results may vary.  
Images courtesy of NC Retina Associates and Dr. Mark H. Nelson, MD.

Ask your doctor if ForeseeHome to help detect wet AMD early is right for you

Questions? Contact the Notal Vision Diagnostic Clinic

1-888-910-2020

Mon-Fri, 8 AM to 6 PM EST  
[www.foreseehome.com](http://www.foreseehome.com)



FDA Cleared



Medicare Covered

ForeseeHome AMD Monitoring Program is covered by Medicare, subject to its coverage requirements for the test, to assess patients with intermediate dry AMD who are at risk of developing wet AMD.

**Indication for Use:** ForeseeHome is intended for use in the detection and characterization of central and paracentral metamorphopsia (visual distortion) in patients with age-related macular degeneration as an aid in monitoring progression of disease factors causing metamorphopsia including, but not limited to choroidal neovascularization (CNV). It is intended to be used at home for patients with stable fixation. ForeseeHome is not intended to diagnose; diagnosis is the responsibility of the prescribing eye-care professional.

ForeseeHOME™  
AMD Monitoring Program