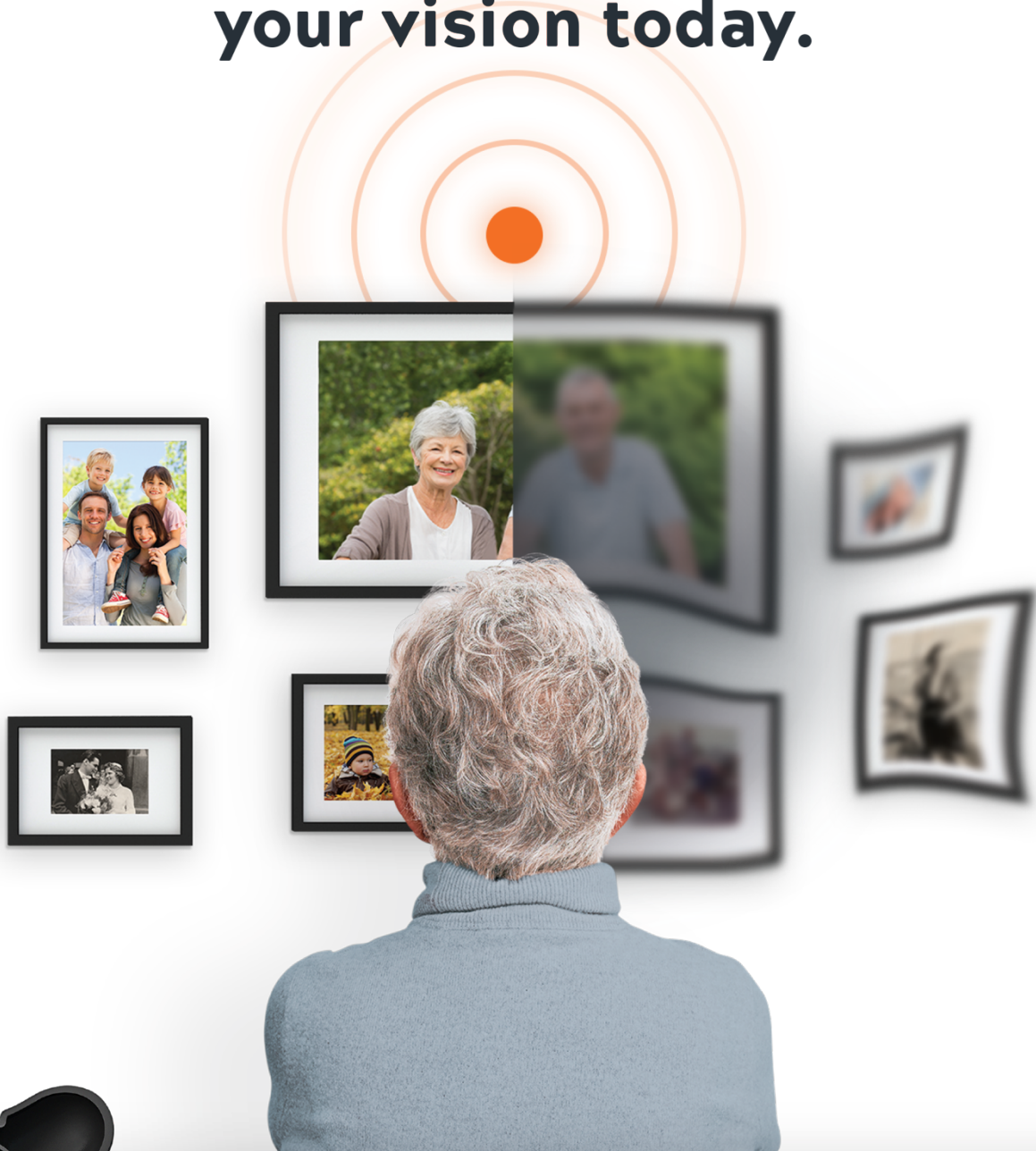


Don't let wet AMD rob your vision.
**Take the first step to help preserve
your vision today.**



ForeseeHOME™
AMD Monitoring Program

A couple of minutes per day. It's that easy.

ForeseeHome® can help preserve your vision, and your independence

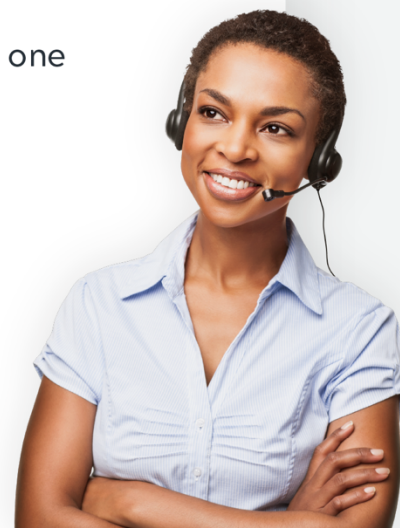


Your doctor has referred you to the ForeseeHome AMD Monitoring Program because you have dry Age-related Macular Degeneration (AMD) and are at risk of progressing to a more advanced form called wet AMD, which may cause sudden and undetected changes in your eyes that can lead to severe vision loss.

WHAT HAPPENS NEXT

- Your doctor's office will send a referral to the Notal Vision Diagnostic Clinic to enroll you in the ForeseeHome AMD Monitoring Program
- **Call the Notal Vision Diagnostic Clinic tomorrow (8AM-6PM EST) at 1-888-910-2020** to schedule a phone appointment with a ForeseeHome Clinical Partner
- During the call, we will answer any questions you may have about AMD and ForeseeHome, and review your insurance benefits and coverage options
 - ForeseeHome is covered by Medicare and most private insurance
- The ForeseeHome device will be shipped to your home within one week after your initial call
- Once delivered, we will walk you through the simple steps on how to operate the device and begin testing

Your ForeseeHome Clinical Partner is here for you throughout your ForeseeHome journey.



Home Monitoring Checklist

- ☒ Received a ForeseeHome® physician referral
- ☐ Call the Notal Vision Diagnostic Clinic tomorrow at **1-888-910-2020** to get started*
- ☐ Schedule an appointment to speak with your ForeseeHome Clinical Partner

www.foreseehome.com

1-888-910-2020

Monday-Friday, 8 AM to 8 PM EST

*If we don't hear from you, you will receive a call from the Notal Vision Diagnostic Clinic within 1-2 days.



ForeseeHome® is a registered trademark, and the ForeseeHome® AMD Monitoring Program and logo and the Notal Vision® logo are trademarks of Notal Vision®.
© 2019 Notal Vision®, Inc. All rights reserved. SM-055.01